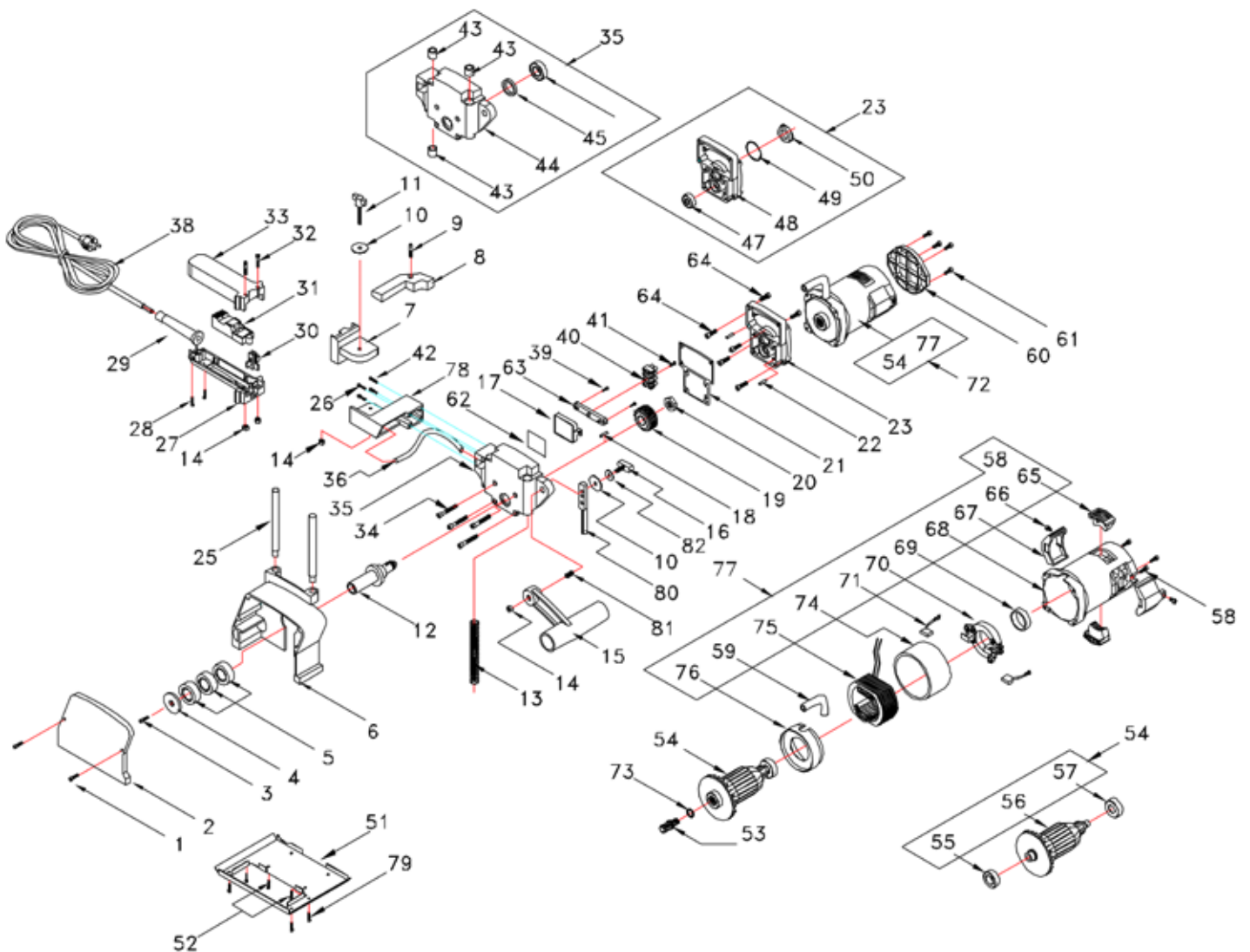


REMS Krokodil 125



deu

eng

fra

ita

5	Distanzscheibe 3 mm	Spacer disc 3 mm	Entretoise 3 mm	Disco distanziatori 3 mm	185110 R
5	Distanzscheibe 6 mm	Spacer disc 6 mm	Entretoise 6 mm	Disco distanziatori 6 mm	185111 R
5	Distanzscheibe 10 mm	Spacer disc 10 mm	Entretoise 10 mm	Disco distanziatori 10 mm	185112 R
5	Distanzscheibe 20 mm	Spacer disc 20 mm	Entretoise 20 mm	Disco distanziatori 20 mm	185113 R
12	Trennscheibenwelle	Cutting disc shaft	Arbre de disque diamanté	Albero di disco diamantato	185029 R
21	Dichtung	Seal	Arbre	Guarnizione	185201 R
39	Linsenschraube	Filister head screw	Vis tête fraisée bombée	Vite a testa svasata con perno	083128
49	O-Ring	O-ring	Joint torique	Guarnizione O-Ring	060302
54	Anker kompl. mit Lager	Rotor compl. with bearing	Induit compl. avec support	Indotto compl. con supporto	180513 R220
57	Rillenkugellager	Grooved ball bearing	Roulement à billes	Cuscinetto a sfere	057064
65	Lüftungsdeckel	Ventilator cover	Couvercle ventilateur	Coperchio ventilatore	180508
66	Linsenschraube	Filister head screw	Vis tête fraisée bombée	Vite a testa svasata con perno	083128
67	Deckel	Cover	Couvercle	Coperchio	180516
69	Dämmring	Insulating ring	Anneau isolant	Anello isolante	180518
71	Kohlebürsten Paar 230 V	Carbon brushes pair 230 V	Balais de charbon paire 230 V	Carboncini paio 230 V	180576 R220
71	Kohlebürsten Paar 110 V	Carbon brushes pair 110 V	Balais de charbon paire 110 V	Carboncini paio 110 V	180576 R110
73	O-Ring	O-ring	Joint torique	Guarnizione O-Ring	060313
75	Stator	Stator	Stator	Statore	185200 R220